

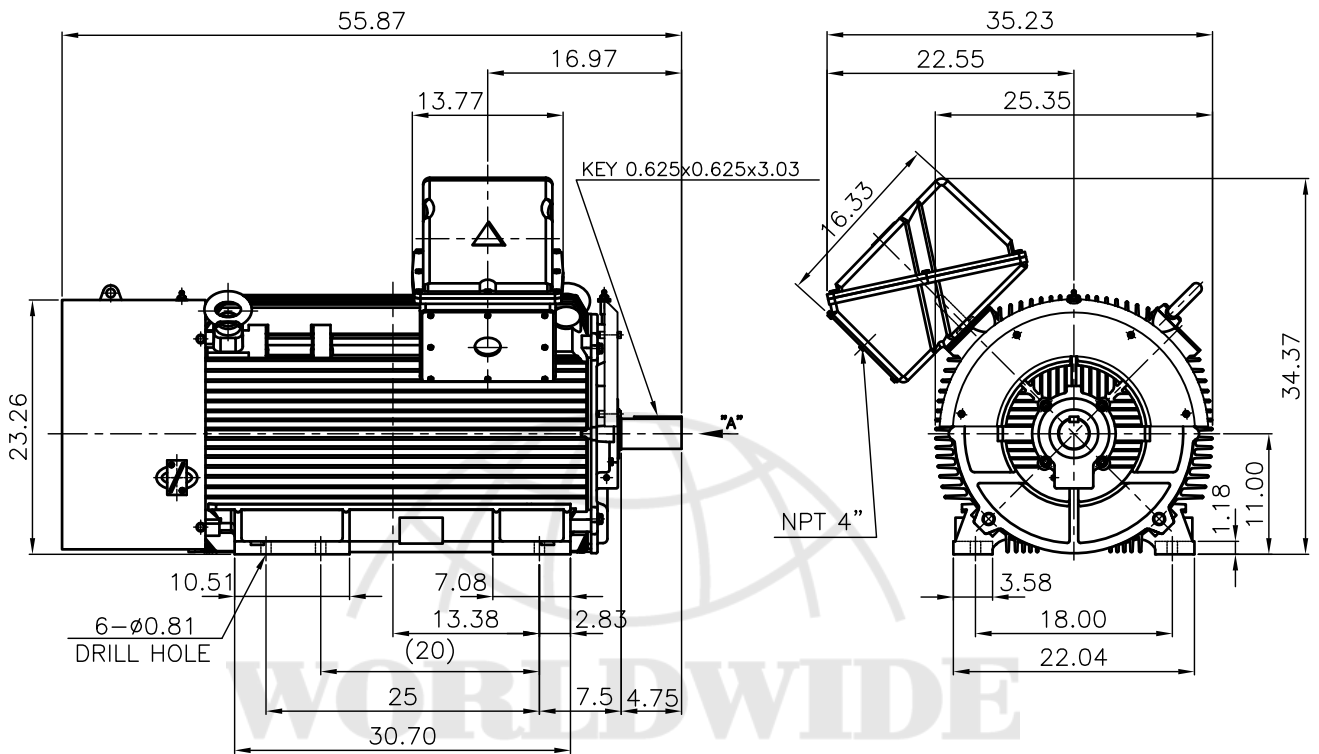
| | | | |
|--|--|---------------------------|-------------|
| MODEL NUMBER | HSDE350-36-L449TS | | |
| HORSEPOWER | 350 | | |
| RPM / POLES | 3600 / 2 | | |
| VOLTAGE / PHASE | 460 V / 3 | | |
| FRAME | L449TS | | |
| ENCLOSURE / DEGREE OF PROTECTION | TEFC / IP55 | | |
| FREQUENCY | 60 HZ | | |
| FULL LOAD SPEED | 3570 RPM | | |
| SERVICE FACTOR | 1.15 | | |
| INSULATION CLASS | F Class N Varnish | | |
| FULL LOAD AMPS | 378.5 A | | |
| LOCKED ROTOR CURRENT | 2649.5 A | | |
| NEMA CODE LETTER | G | | |
| EFFICIENCY / POWER FACTOR | <u>LOAD</u> | <u>EFF.</u> | <u>P.F.</u> |
| | 100 % | 95.8 % | 90.0 % |
| | 75 % | 95.4 % | 88.0 % |
| | 50 % | 95.2 % | 83.0 % |
| DUTY CYCLE | S1 / Continuous | | |
| TORQUE | <u>FULL LOAD</u> | <u>LRT</u> | <u>BDT</u> |
| | 513.1 lb.ft. | 130 % | 225 % |
| NEMA DESIGN | B | | |
| MOMENT OF INERTIA | <u>LOAD (Max.)</u> | <u>MOTOR</u> | |
| | 281 lb.ft. ² | 50.55 lb.ft. ² | |
| SOUND PRESSURE LEVEL (No Load 1 M From Motor) | 87 dB(A) | | |
| NUMBER OF STARTS (Hot / Cold) | 1 Hot / 2 Cold | | |
| MAX. AMBIENT TEMPERATURE | 40° C | | |
| MAX. ELEVATION | 3300 Ft. Above Sea Level | | |
| TEMPERATURE RISE (At Full Load) | 80° C | | |
| DRIVE-END BEARING | 6315C3 | | |
| OPPOSITE DRIVE-END BEARING | 6315C3 | | |
| GREASE TYPE | Mobil Polyrex EM | | |
| MOUNTING | F1 | | |
| ROTATION | Uni-directional (CCW viewed from DE) | | |
| APPROXIMATE WEIGHT | 3090 lbs. | | |
| AREA CLASSIFICATION | Class I, Division 2, Groups A, B, C, D | | |
| TEMPERATURE CODE | T3 Up To 45°C | | |
| INVERTER RATING | 10:1 VT at Full Load / 20:1 VT at 50% Load 4:1 CT at Full Load / 10:1 CT for 1 Hour Cycle | | |
| SPECIFICATION - In Accordance With | NEMA, CSA | | |



CC038A



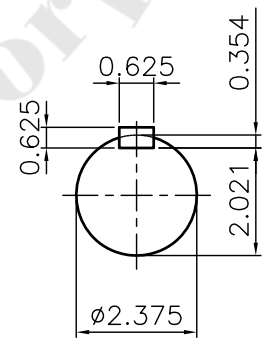
| | | | |
|--|--|-------------|------------------------------|
| | <h1>TEFC</h1> <h2>THREE PHASE INDUCTION MOTOR</h2> | TYPE | L,J,LP,JP CAST IRON FRAME |
|--|--|-------------|------------------------------|



NOTE

1.TOLERANCE :

| | | | |
|----------------|--------------|--------|--------|
| CENTER HEIGHT | 11 | +0.000 | -0.060 |
| SHAFT DIAMETER | $\phi 2.375$ | +0.000 | -0.001 |
| KEYWAY WIDTH | 0.625 | +0.002 | -0.000 |



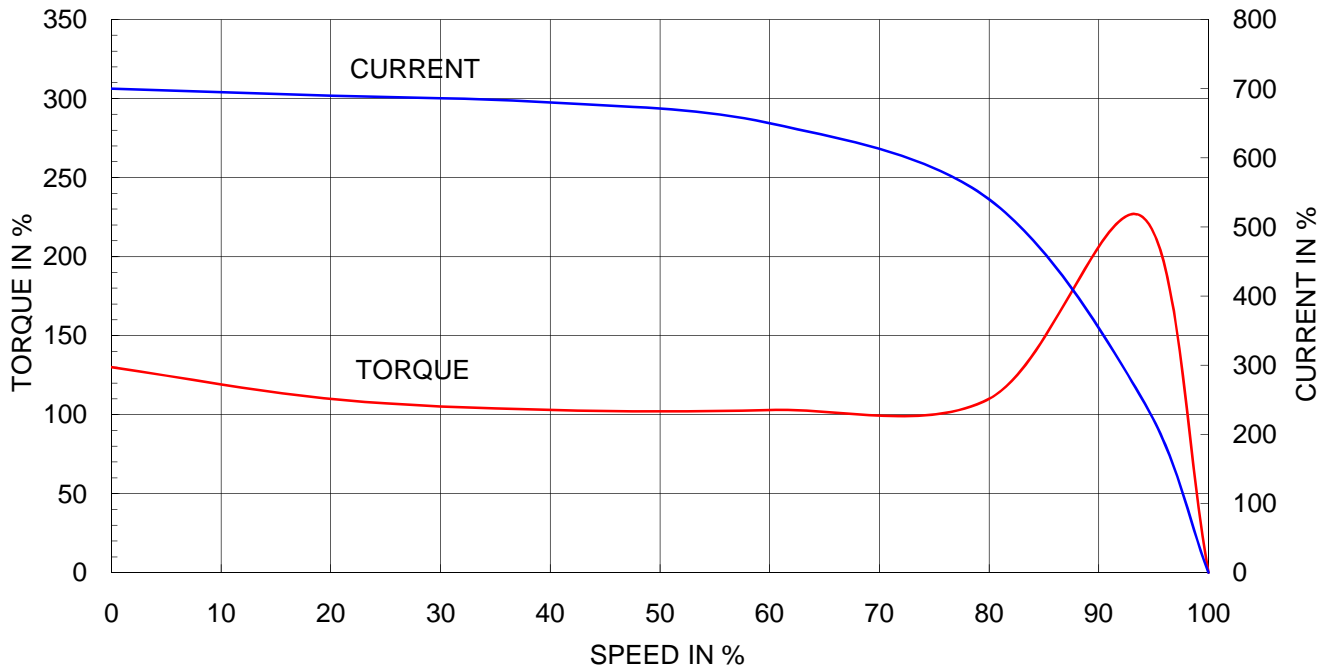
TEFC STANDARD

| Q'TY | DESCRIPTION | MATERIAL | DIMENSION | WEIGHT | PART NO. | REMARK | NO. |
|---------|-------------|----------|-----------------|---------|--|----------------|-----------|
| APPD BY | 강경중 | UNIT | mm | SUBJECT | XL SERIES Fr.449TS-2P(44KJH) | DWG SIZE | A4 (1:18) |
| CHKD BY | 김진홍 | SCALE | 1/18 | TITLE | NEMA STD SHAFT(AISI 1045 SHAFT) Outline | | |
| CHKD BY | 김옥진 | PROJEC'N | 3각법 (3rd Angle) | REF. NO | Sheet No. of | | |
| DSND BY | 김양규 | DATE | 2013-01-05 | DWG NO | LM-T044XB3CL001 | Revision No. 1 | |

| | | |
|-----------------------------|---|--------------------------|
| Type | : | PJ |
| Full Load Torque | : | 513.1 lb.ft |
| Motor moment of Inertia (J) | : | 50.6 lb.ft ² |
| Load moment of Inertia (J) | : | 281.0 lb.ft ² |

| | | | |
|-------------------|---------------|----------|--------|
| 260 kW | 350 HP | 60 Hz | |
| 2 P | Rated Speed : | 3570 RPM | |
| Rated Voltage | 575V | 460V | 230V |
| Full Load Current | 304.1A | 380.1A | 760.1A |

SPEED VS TORQUE & CURRENT CURVE



OUTPUT VS EFF., P.F & CURRENT CURVE

